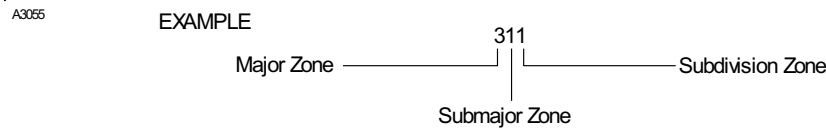


AIRPLANE ZONING - DESCRIPTION AND OPERATION

1. General

- A. The Model 208 is divided into numbered zones to provide a method for locating components. The zones are identified by a three-digit number as shown in the example below. Each digit designates a zone category: major, submajor or subdivision.



B. Major Zones.

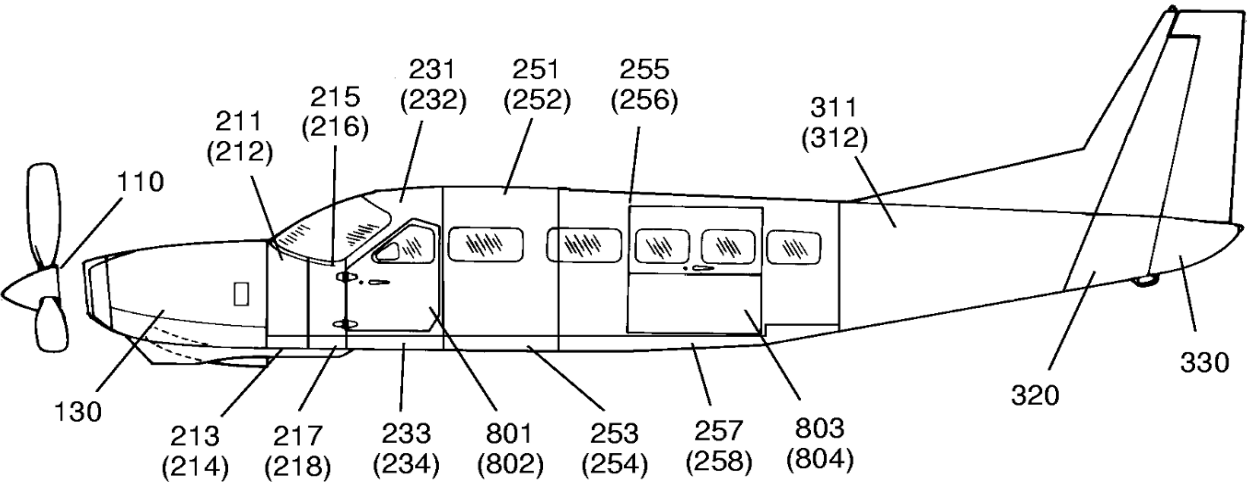
- (1) 100 - FS 100.0 forward side of firewall and forward.
- (2) 200 - FS 100.0 aft side of firewall to FS 308.00 (208), FS356.00 (208B).
- (3) 300 - FS 308.00 (208), FS356.00 (208B) to end of airplane.
- (4) 500 - Left wing.
- (5) 600 - Right wing.
- (6) 700 - Landing gear.
- (7) 800 - Cabin and cargo doors.
- (8) 900 - Cargo pod (if applicable).

2. Description

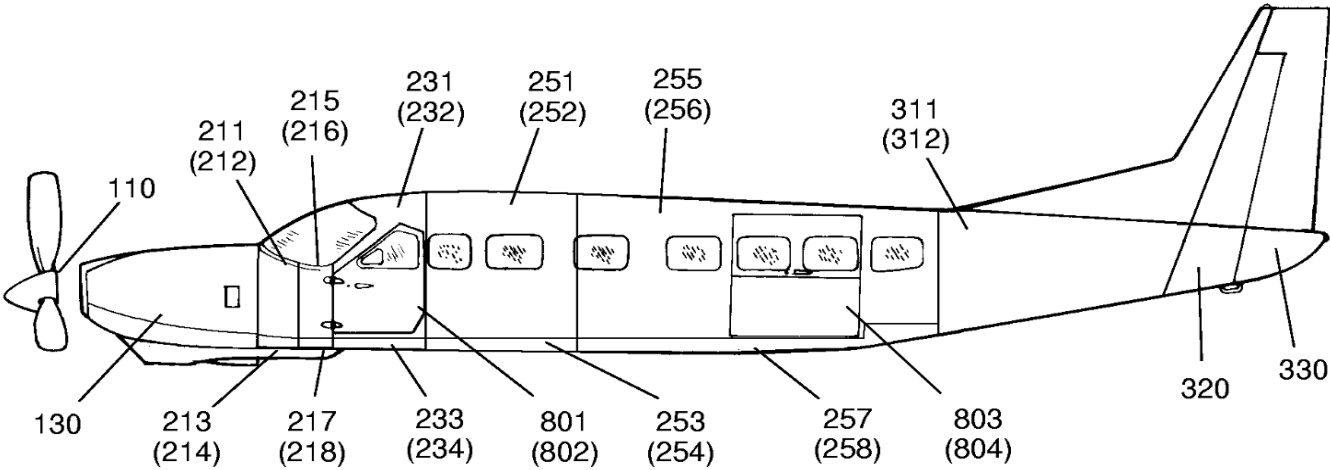
- A. Airplane zones may be utilized for location of work areas and components prior to beginning maintenance or service tasks on the airplane. Airplane zones are used in this manual to locate items such as placards and markings displayed on interior and exterior surfaces of the airplane. For a breakdown of the airplane zones, refer to Figure 1.

Figure 1 : Sheet 1 : Airplane Zones

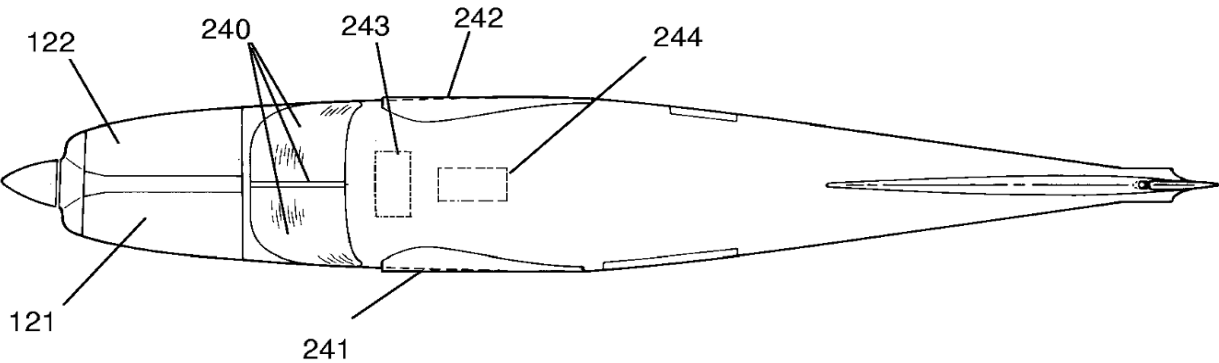
A22943



208 FUSELAGE ZONES



208B FUSELAGE ZONES



2610X2003
2610X3003
2610X3002

Figure 1 : Sheet 2 : Airplane Zones

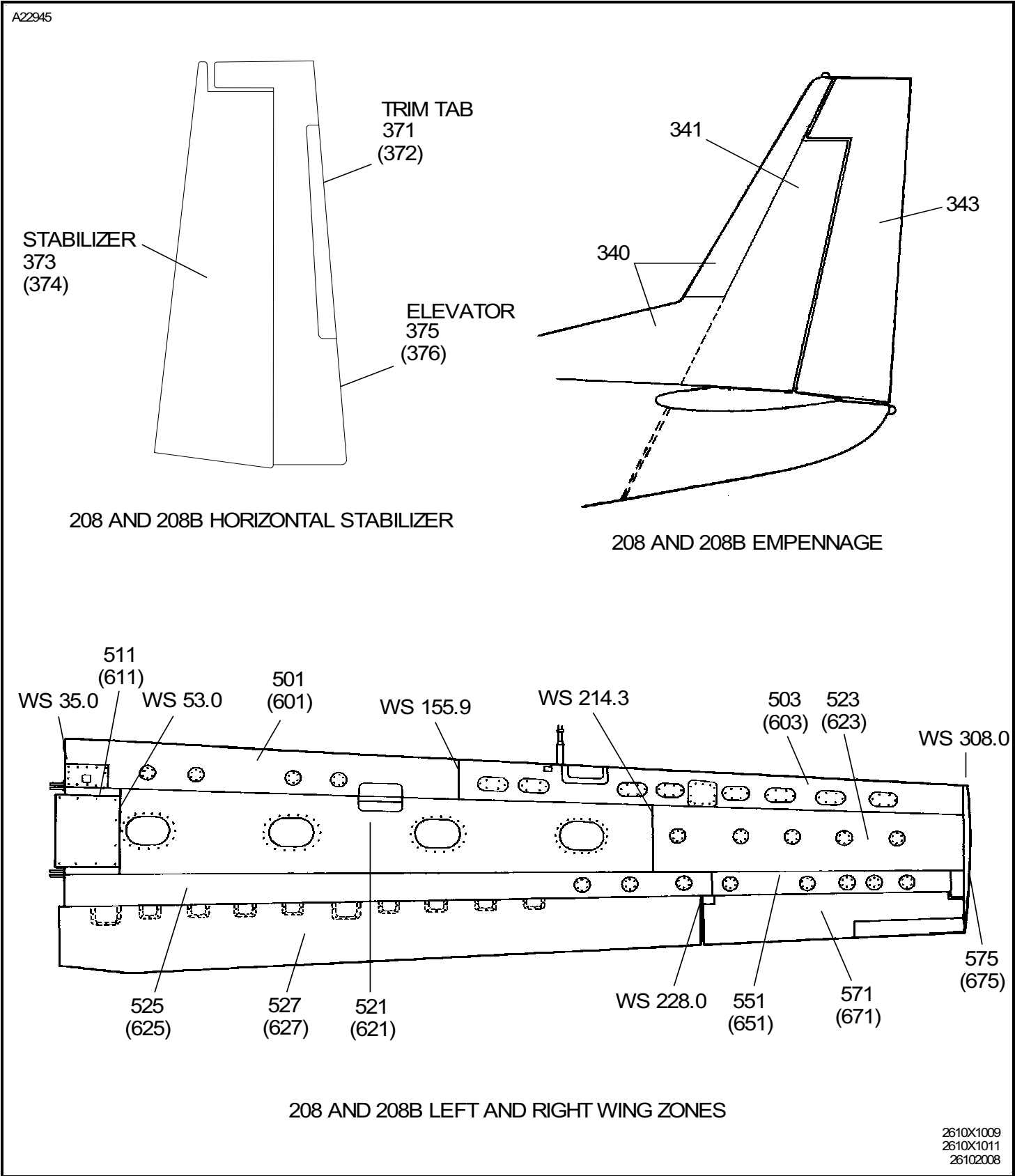


Figure 1 : Sheet 3 : Airplane Zones

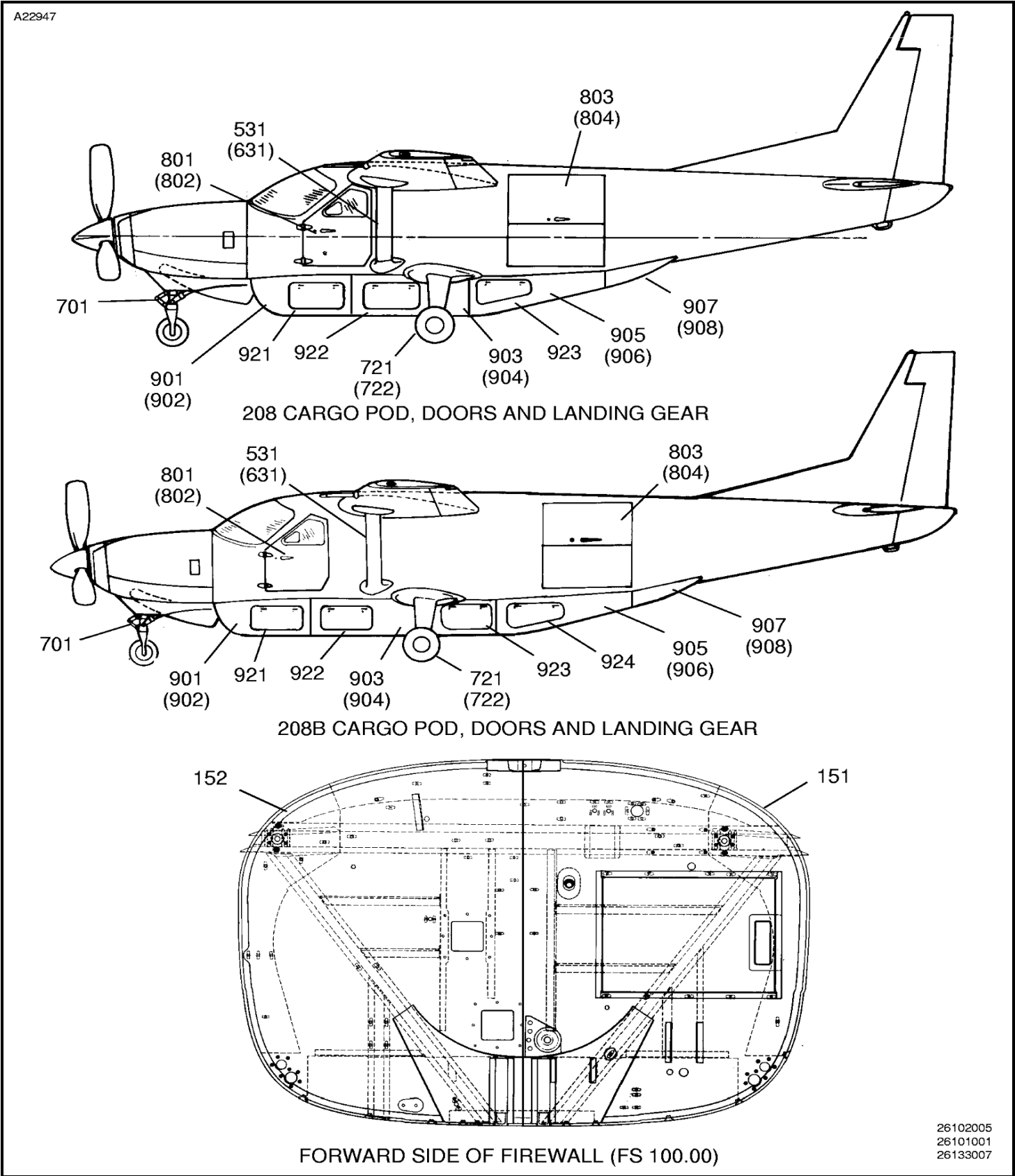
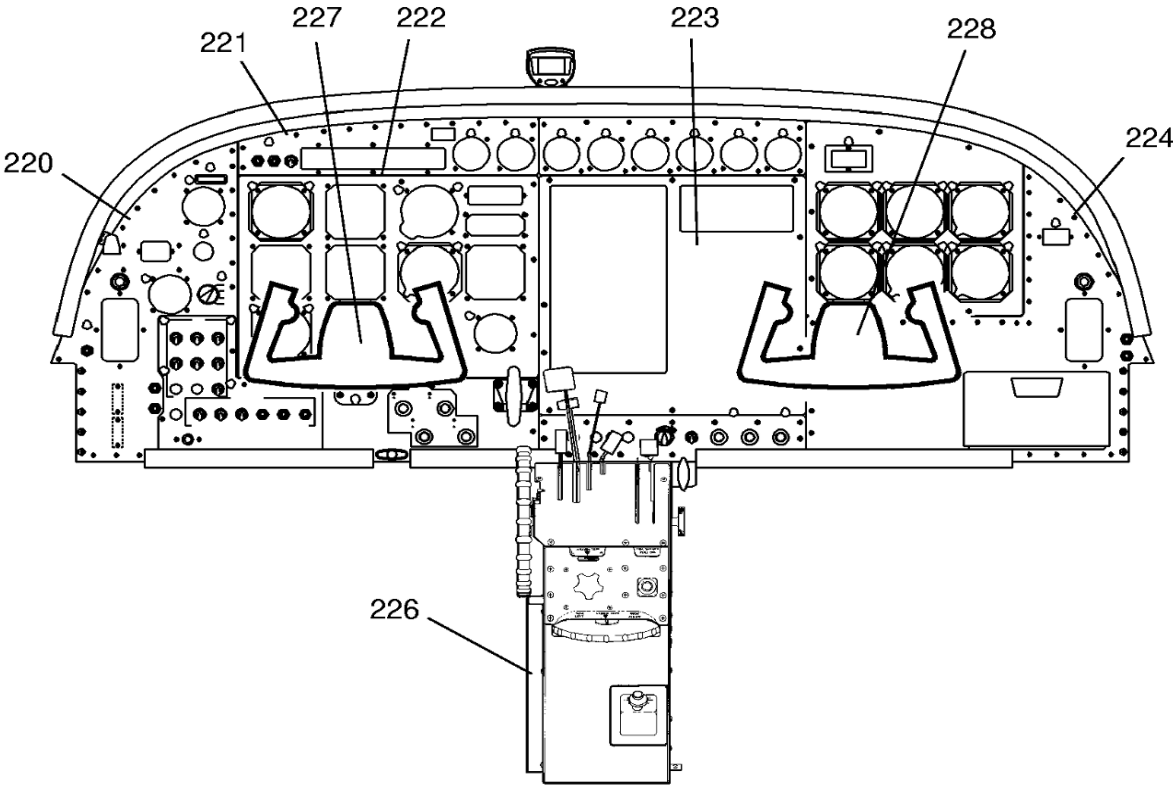
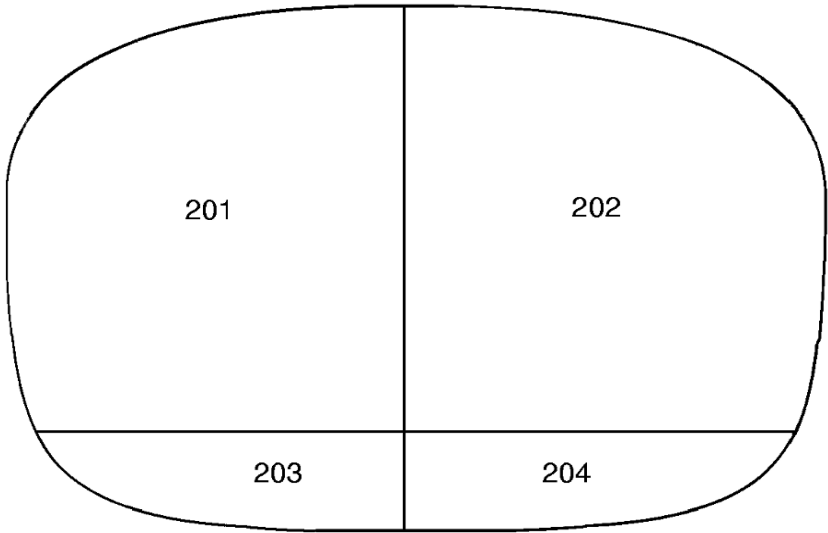


Figure 1 : Sheet 4 : Airplane Zones

A22939



INSTRUMENT PANEL AND CENTER PEDESTAL



FIREWALL LOOKING FORWARD

2618C1014
26182015
2613X3007